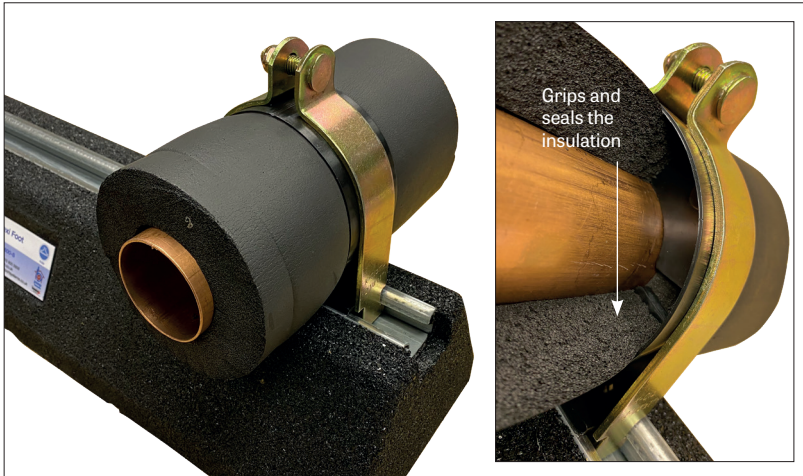


## K-KLAMP - PIPE AND INSULATION CLAMP



K-KLAMP eliminates having to double-wrap, glue and tape the insulation on strut-mounted clamps. K-KLAMP pipe and insulation coupling reduces the time required to insulate copper tubing used for refrigerant lines. Our clamp allows sections of closed-cell insulation to be secured at fixing points.

### FEATURES

- Reduces installation time
- Provides complete vapour barrier without gluing or taping
- Improved finished appearance
- Insulation wall thicknesses – 3/8", 1/2", 3/4" and 1"
- Pipe diameters from 1/4" up to 4-1/8"

### THE PACKAGE

- K-KLAMP (pack of 1)

### RELATED PRODUCTS

- Dairy Cabinet Pump
- Cushion clamp
- RPC range

Part code		Insulation wall thickness			
		3/8"	1/2"	3/4"	1"
Copper pipe I.D.	1/4"	K38-14	-	K34-14	-
	3/8"	K38-38	K12-38	K34-38	-
	1/2"	K38-12	K12-12	K34-12	K100-12
	5/8"	K38-58	K12-58	K34-58	K100-58
	3/4"	K38-34	K12-34	K34-34	K100-34
	7/8"	K38-78	K12-78	K34-78	K100-78
	1"	K38-100	K12-100	-	-
	1-1/8"	K38-118	K12-118	K34-118	K100-118
	1-3/8"	K38-138	K12-138	K34-138	K100-138
	1-5/8"	K38-158	K12-158	K34-158	K100-158
	2-1/8"	K38-218	K12-218	K34-218	K100-218
	2-5/8"	-	K12-258	K34-258	K100-258
	3-1/8"	-	K12-318	K34-318	K100-318
	3-5/8"	-	K12-358	K34-358	K100-358
	4-1/8"	-	K12-418	K34-418	K100-418

CLAMPS & CLIPS  
**K-KLAMP**  
 Pipe and Insulation Clamp

The DiversiTech International sales team are available to answer your questions or queries on this product. Our experts are waiting for your call +44 (0)115 900 5858 or if you prefer send an email to [sales@diversitech.com](mailto:sales@diversitech.com) or visit [www.diversitech.global](http://www.diversitech.global)

**DIVERSITECH**  
 INTERNATIONAL

Glaisdale Drive East  
 Nottingham NG8 4LY  
 United Kingdom